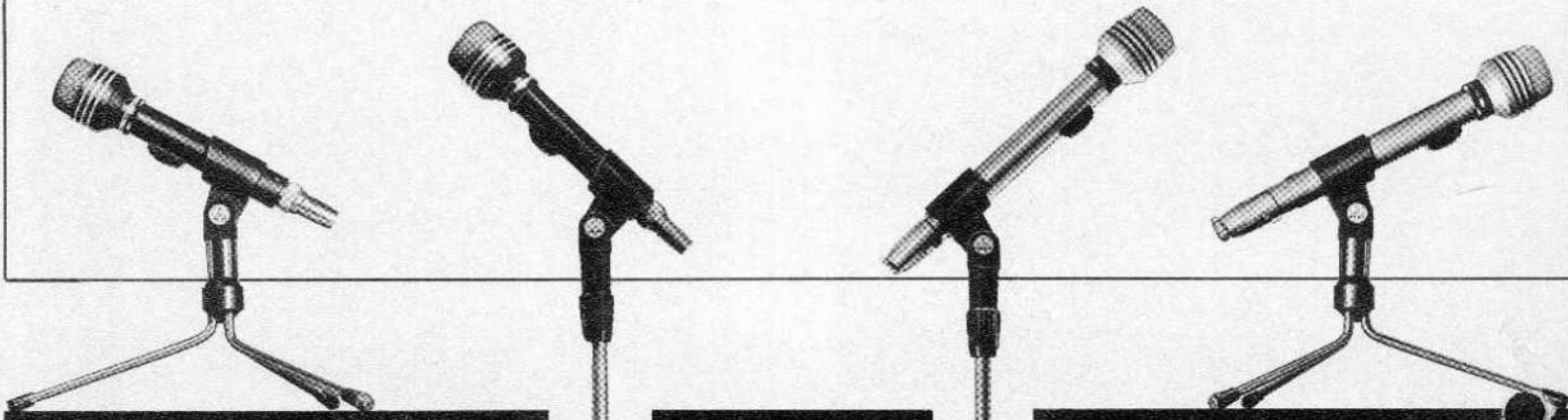


Frequency range: 40–16.000 cps. — Directional characteristic: cardioid  
 Bass attenuation: without gradation at 50 cps, 0–10 db (see curve below)  
 Front to back ratio: approx. 15 db at 180°, sound incidence at 1000 cps.  
 Stand connector SA 11: stand adapter can be connected to threads of 5/8"–27, 3/8" and 1/2"  
 Accessories: table stands and floor stands St 1, ST 200, ST 102 A.

D 119 CS

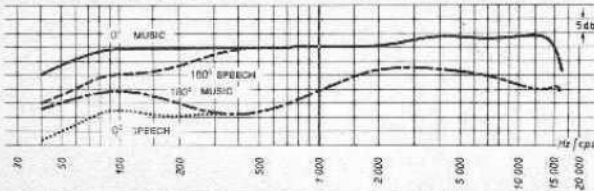
D 119 ES



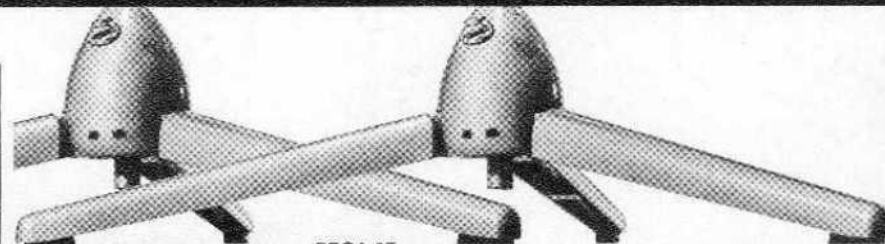
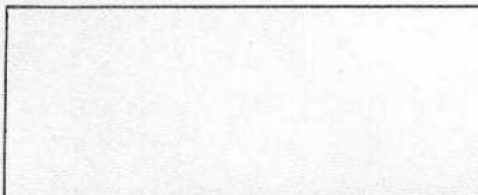
mat/black
200 ohms
0,18 millivolts/microbar
up to 200 meters maximum can be used. For normal use (up to 5 m) we recommend our MK 1/5 cable with one connecting plug or MK 2/5 with connecting plugs at both ends.
AKG type 1483 Var. 1
D 119 CS, stand adapter SA 11 with a thread adapter SHZ 4, microphone plug 1483 Var. 1, original frequency curve, elegant coverbag.
approx. 6 1/2 oz.
For high impedance amplifier inputs a transformer should be connected, independent of the microphone cable.

finish
impedance
sensitivity (1000 cps)
cable length
plug connections
dimensions
parts supplied
weight
transformer

satin-silver		
50–60 ohms	150–250 ohms	high impedance
0.10 millivolts/microbar	0.18 millivolts/microbar	2.0 millivolts/microbar
up to 200 meters For normal use (up to 5 m) we recommend our MK 3/5 with one connecting plug.		up to 5 m
CANNON XLR 5–11C		
D 119 ES, stand adapter SA 11 with a thread adapter SHZ 4, original frequency curve, elegant coverbag.		
approx. 7 1/2 oz.		
built into the microphone.		



Each D 119 is tested and measured in one of the precision-test laboratories of AKG, and the test curve is registered by a Brüel & Kjær Automatic Frequency Response Recorder. An individual curve is supplied with each D 119, so that you are able to hear and see the high quality and precision.



PROA 2E

Printed in Austria

